



CITY OF RICHMOND

MS₄

Annual Report Year 2

March 25, 2021

Texas Commission on Environmental Quality
Stormwater & Pretreatment Team Leader (MC-148)
P.O. Box 13087
Austin, Texas 78711-3087

Re: Phase II MS4 Annual Report Transmittal for City of Richmond
TPDES Authorization: TXR040589.

Dear Team Leader:

This letter serves to transmit the required annual report for the Texas Pollutant Discharge Elimination System Small Municipal Separate Storm Sewer System General Permit, Authorization Number TXR040589 for the City of Richmond.

The annual report is for Year 2. The reporting period's beginning January 1, 2020 and ending December 31, 2020.

A separate Notice of Change has not been submitted based on the fact that changes have not been proposed for the next permit year.

As required by the general permit, a copy of the report has been mailed to the TCEQ's regional office 12 in Houston, Texas.

Sincerely,



Scott Fajkus

City of Richmond
Utilities Coordinator
600 Morton
Richmond, TX 77469
281-342-0559 ex.112
sfajkus@richmondtx.gov

cc: TCEQ
Water Quality Division
c/o Karian Rocha
5425 Polk St, Ste H
Houston, TX 77023-1452

Phase II (Small) MS4 Annual Report Form

TPDES General Permit Number TXR040589

A. General Information

Authorization Number: TXR040589

Reporting Year (year will be either 1, 2, 3, 4, or 5): 2

Annual Reporting Year Option Selected by MS4:

Calendar Year 2020

Permit Year _____

Fiscal Year: _____ Last day of fiscal year: (_____)

Reporting period beginning date: (month/date/year) 1-1-2020

Reporting period end date (month/date/year) 12-31-2020

MS4 Operator Level: 2 Name of MS4: City of Richmond

Contact Name: Scott Fajkus Telephone Number 281-342-0559

Mailing Address: 600 Morton, Richmond, TX 77469

E-mail Address: sfajkus@richmondtx.gov

A copy of the annual report was submitted to the TCEQ Region
YES NO Region the annual report was submitted. TCEQ
Region 12

B. Status of Compliance with the MS4 GP and SWMP

1. Provide information on the status of complying with permit conditions: (TXR040000 Part IV Section B.2.):

	Yes	No	Explain
Permittee is currently in compliance with the SWMP as submitted to and approved by the TCEQ.	X		
Permittee is currently in compliance with recordkeeping and reporting requirements.	X		
Permittee meets the eligibility requirements of the permit (e.g., TMDL requirements, Edwards Aquifer limitations, compliance history, etc.)	X		

2. Provide a general assessment of the appropriateness of the selected BMPs. You may use the table below (**See Example 1 in instructions**):

MCM(s)	BMP	BMP is appropriate for reducing the discharge of pollutants in stormwater (Answer Yes or No and explain.)
1. Public Education	Storm Drain Markings.	Yes. Storm drain marking heightens public awareness about how most drainage systems are directly connected to receiving waters without any treatment. This will help to inform the public about the impacts polluted storm water runoff can have on water quality.
1. Public Education	Municipal Staff Training	Yes. Education will help in reduction of illicit discharges.
1. Public Education	Construction Site Operator Education	Yes. Training staff to help prevent storm water pollution.
1. Public Education	Public Participation	Yes. Public will participate in volunteer programs to assist in projects that will focus on clean-up projects which will eliminate pollution.
2. Illicit Discharge Detection and Elimination	Storm Sewer Screening / Illicit Discharge Inspection	Yes. This will decrease the increase of illegal discharge detection through screening.
2. Illicit Discharge Detection and Elimination	Sanitary Sewer Overflow and Infiltration	Yes. Inspection will limit the occurrence and frequency of sanitary overflows.
2. Illicit Discharge Detection and Elimination	Storm Drainage Mapping	Yes, Identification of outfalls is key to eliminating pollutants in discharge areas.

MCM(s)	BMP	BMP is appropriate for reducing the discharge of pollutants in stormwater (Answer Yes or No and explain.)
2. Illicit Discharge Detection and Elimination	Storm Water Pollution Prevention Training	Yes. Staff trained will help recognize signs of illicit discharge and dumping.
2. Illicit Discharge Detection and Elimination	Illicit Discharge Detection Ordinance	Yes. Respond to all complaints and enforce as needed.
2. Illicit Discharge Detection and Elimination	Illicit Discharge Detection and Elimination Program	Yes. The program is designed to detect and eliminate illicit discharges to the ms4.
3. Construction Site Stormwater Runoff Control	Construction Plan Review and Notification of Contractors	Yes, Review plans for storm water control measures and inspect accordingly
3. Construction Site Stormwater Runoff Control	Maintain Legal Authority and Guidelines	Yes, Guidelines for construction documents are maintained and revised as necessary and made accessible through the internet.
3. Construction Site Stormwater Runoff Control	Inspection of Construction Sites and Enforcement of Control Requirements	Yes, Construction sites will be required to design, install, implement, and maintain effective BMP's to minimize the discharge of pollutants.
3. Construction Site Stormwater Runoff Control	Receipt and Consideration of Information Submitted by the Public	Yes, Tracking the process in which submitted information from the public, both written and verbal, is recorded and then provided to the construction site inspector for possible follow-up.
3. Construction Site Stormwater Runoff Control	Storm Water Pollution Prevention Training	Yes. Train employees to be aware of what they can do to help reduce pollutants in stormwater run-off.
4. Post Construction Storm Water Management in	Code Review and Updates	Yes. Ensure that storm water quality objectives are addressed in early stage of development.
4. Post Construction Storm Water	Inspection of Construction Sites and Enforcement of Control Measure Requirements	Yes, Require maintenance activities for long term post construction stormwater controls.
4. Post Construction Storm Water Management in	Long-Term Inspection and Maintenance Plan	Yes. Implement checklist to review development plans for long term inspection and maintenance
5. Pollution Prevention Good House Keeping for Municipal Operations	Contractor Training and Oversight	
5. Pollution Prevention Good House Keeping for Municipal	Waste Disposal	

MCM(s)	BMP	BMP is appropriate for reducing the discharge of pollutants in stormwater (Answer Yes or No, and explain.)
5. Pollution Prevention Good House Keeping for Municipal Operations	Street Sweeping	Yes. Timely inspections can minimize the discharge of pollutants.
5. Pollution Prevention Good House Keeping for Municipal Operations	Litter Control	Yes. Protection around stockpile areas will retain sediment.
5. Pollution Prevention Good House Keeping for Municipal Operations	Municipal Employee Training	Yes. Minimize storm water pollution from activities related to municipal operations.
5. Pollution Prevention Good House Keeping for Municipal Operations	Structural Control Maintenance	Yes. It will address maintenance activities, maintenance schedules, and long-term inspection procedures.
5. Pollution Prevention Good House Keeping for Municipal Operations	Municipal Stockpile Area	Yes. It will minimize silt and other pollutants from being discharged into major waterways that flow into the watershed.
5. Pollution Prevention Good House Keeping for Municipal Operations	Facility Inspection Program	Yes. Timely inspections can minimize the discharge of pollutants
5. Pollution Prevention Good House Keeping for Municipal Operations	Cold Weather Conditions and Parking Lot / Road Maintenance	Yes, Road and Parking Lot maintenance will help address water quality issues.

3. Describe progress towards reducing the discharge of pollutants to the maximum extent practicable. Summarize any information used (such as visual observation, amount of materials removed or prevented from entering the MS4, or if required monitoring data, etc.) to evaluate reductions in the discharge of pollutants. You may use the table (See Example 2 in instructions):

MCM	BMP	Information Used	Quantity	Units	Does the BMP Demonstrate a Direct Reduction in Pollutants? (Answer Yes or No, and explain.)
1	Storm Drain Markings	Inspected 20% Storm Drains	All markers good and none needed replacing	Storm Markers	No. Reminds residents no to dump into storm drains which may reduce pollution over time.
1	Storm Water Quality and Educational Material	Brochures information on website	Did not distribute any brochures due to covid-19	Online information on website	No. Educating the public should lead to a reduction in pollutants entering into the drainage system.
2	Storm Drainage System Mapping	Continue to map additional drainage system in the City	Annual Update	Storm Drainage System Mapping	No. It will identify major storm sewer pipes, ditches, and other conveyances owned or operated by the City within the SWMP coverage, as well as any additional information needed by the City to implement this BMP

4	Inspection of Completed Projects	Review all site plans submitted for new development projects	4	Inspections	Yes. Inspections on all constructions sites reduces the amounts of pollutants discharged.
4	Inspection of Construction Sites and Control Measures	IworQ's System Purchased	Software Program	1	No, this will allow us to track and inspect projects accordingly until the project is finished
5	Construction Site Storm Water Run Off Control	Require submission of construction plans to verify compliance with temporary erosion controls	4	Review Plans	No, this does not directly affect pollution reduction but give opportunity to ensure that controls have been properly designed prior to beginning construction.
6	Street Sweeping	Sweep Streets Daily	117 Miles of curb swept and 140 miles of open ditched / litter	Number and Miles of Streets	Yes, sweeping streets removes sediment and debris that impacts the storm sewer system and affects water quality.
6	Liter Control	Continue Curbside Recycling	3,138 Recycle Bins	Program	Yes, having a curbside recycling program reduces litter by giving residents a way to dispose of recyclables.
6	Facility Inspection Program	Grease Trap Inspections completed Every two months	330	Inspections	Yes, requiring grease traps reduces the amount of grease entering the sanitary system which reduces the chance or overflows.
6	Waste Disposal and Litter Control	Provide spring and Fall Clean Up for all residents inside the City Limits.	3,600	Units	Yes. This reduces the amount of waste that otherwise would be disposed improperly.

MCM	BMP	Information Used	Quantity	Units	Does the BMP Demonstrate a Direct Reduction in Pollutants? (Answer Yes or No, and explain.)

4. Provide the measurable goals for each of the MCMs, and an evaluation of the success of the implementation of the measurable goals (**See Example 3 in instructions**):

MCM(s)	Measurable Goal(s)	Explain progress toward goal or how goal was achieved
1	Municipal Staff Training	Met Goal. The City conducted a 1hour training course on pollution and illegal dumping.
1	Storm Drain Markings	Met Goal. Inspected 20% of storm drains and replaced 70 markers.
1	Storm Water Quality and Educational Material	Met Goal. Outreach material was only posted on the website this year due to covid-19.
2	Sanitary Sewer Overflow Initiative (SSOI) Participation	Grease trap inspections completed every quarter by public works employee.
2	Storm Drainage System Mapping	Jones and Carter continue Storm Water Mapping GIS for Wastewater and Water
3	Construction site Storm Water Run Off Control	Met Goal. Require submission of plans for all new projects.
4	Inspection of Construction Sites and Enforcement of Control Measures	Met Goal. Track new development and redevelopment of new projects with new software program (iWorq). Update and track with updated GIS capability.
5	Street Sweeping / Litter Control	Met Goal. Street sweeping is completed Monday thru Friday. Street sweeping consist of one person sweeping or blowing debris into a pile and manually loading the debris for proper disposal and picking up trash in open ditches.
5	Waste Disposal and Litter Control	Met Goal. City host fall and spring clean-up in the City. Inserts advertised in water bills and flyers.
5	Litter Control	Met Goal. Continue Curbside recycling program
5	Facility Inspection Program	Met Goal. City of Richmond inspects grease traps every quarter and monitors grease on health inspection
5	Waste Disposal and Litter Control	Yes. City host fall and spring clean-up in the City. Inserts advertised in water bills and flyers.

MCM(s)	Measurable Goal(s)	Explain progress toward goal or how goal was achieved.

C. Stormwater Data Summary

Provide a summary of all information used including any lab results (if sampling was conducted) to assess the success of the SWMP at reducing the discharge of pollutants to the MEP. For example, did the MS4 conduct visual inspections, clean the inlets, look for illicit discharge, clean streets, look for flow during dry weather, etc.? (Refer to the MS4 General Permit TXR040000 Part IV Section B.2.(b))

D. Impaired Waterbodies

1. If applicable, explain below any activities taken to address the discharge to impaired waterbodies, including any sampling results and a summary of the small MS4's BMPs used to address the pollutant of concern: (Refer to MS4 General Permit TXR040000 Part IV Section B.2.(c))

Not Applicable

2. Describe the implementation of targeted controls if the small MS4 discharges to an impaired water body with an approved TMDL (Refer to the MS4 General permit TXR040000; Part II Section D.4.(a)):

Not Applicable

3. Report the benchmark identified by the MS4 and assessment activities (Refer to the MS4 General permit TXR040000; Part II Section D.4.(a)(6)):

Benchmark Parameter <i>(Ex: Total Suspended Solids)</i>	Benchmark Value	Description of additional sampling or other assessment activities	Year(s) conducted
Not Applicable			

4. Provide an analysis of how the selected BMPs will be effective in contributing to achieving the benchmark (Refer to the MS4 General permit TXR040000; Part II Section D.4.(a)(4)):

Benchmark Parameter	Selected BMP	Contribution to achieving Benchmark
Not Applicable		

5. If applicable, report on focused BMPs to address impairment for bacteria (Refer to the MS4 General Permit TXR040000; Part II Section D.4.(a)(5)):

Not Applicable

Description of bacteria-focused BMP	Comments/Discussion
Not Applicable	

6. Assess the progress to determine BMP's effectiveness in achieving the benchmark (Refer to the MS4 General Permit TXR040000; Part II.D.4.(a)(6)):

For example, the MS4 may use the following benchmark indicators:

- number of sources identified or eliminated;
- decrease in number of illegal dumping;
- increase in illegal dumping reporting;
- number of educational opportunities conducted;
- reductions in sanitary sewer flows (SSOs)
- increase in illegal discharge detection through dry screening

Benchmark Indicator	Description/Comments
Not Applicable	

E. Stormwater Activities

Describe stormwater activities the MS4 operator plans to undertake during the next reporting year. You may use the table below (Refer to the MS4 General Permit TXR040000 Part IV Section B.2.(d)):

MCMs	BMP	Stormwater Activity	Descriptions/Comments
1. Public Education	Storm Drain Markings	Inspect 20% of storm drains and replace 70 markers.	
1. Public Education	Municipal Website	Update website for Educational Information and Events	
1. Public Education	Storm Water Quality and Educational Material	Provide educational material on the website	
2. Illicit Discharge Detection Ordinance	Illicit Discharge Detection Ordinance	Maintain GIS Storm Drainage System Map revise as required or necessary	
2. Illicit Discharge Detection Ordinance	Facility Inspection Program	Conduct grease trap inspections quarterly	
3. Construction Site Stormwater Runoff	Storm Water Pollution Prevention Training	Evaluate training material for existing employees	
4. Post Construction Storm Water Management	Develop Checklist for minimum elements required in SWPP	Checklist developed for construction and tracked using GIS	
5. Pollution Prevention Good House Keeping for Municipal Operations	Waste Disposal	Continue from year 1 to Evaluate City facilities for proper waste disposal practices	
5. Pollution Prevention Good House Keeping for Municipal Operations	Street Sweeping	Cleaning minimizes the spread of pollutants	
5. Pollution Prevention Good House Keeping for Municipal Operations	Litter Control	Conduct quarterly litter pickups in drainage ways adjacent to the Brazos River	

F. SWMP Modifications

Changes have been made or are proposed to the SWMP since the NOI or the last annual report, including changes in response to TCEQ's review.

___ Yes No X

If 'Yes', report on changes made to measurable goals and BMPs (Refer to the MS4 General Permit TXR040000 Part IV Section B.2.(e)):

MCM(s)	Measurable Goal(s) or	Implemented or Proposed Changes (Submit
Not Applicable		

Note: If changes include additions or substitutions of BMPs, include a written analysis explaining why the original BMP is ineffective or not feasible and why the replacement BMP is expected to achieve the goals of the original BMP.

2. Explain additional changes or proposed changes not previously mentioned (i.e. dates, contacts, procedures, annexation of land etc.):

G. Additional BMPs for TMDLs and I-Plans

Provide a description and schedule for implementation of additional BMPs that may be necessary, based on monitoring results, to ensure compliance.

with applicable TMDLs and implementation plans (Refer to the MS4 General permit TXR040000 Part IV Section B.2.(f)).

TCEQ-20561 Instructions (Rev July 2019)

BMP	Description	Implementation Schedule (Start Date etc.)	Status / Completion Date (completed, in progress, not started)
Not Applicable			

H. Additional Information

1. Is the permittee relying on another entity to satisfy some of its permit obligations? (refer to the MS4 General Permit TXR040000 Part IV Section B.2.(g))

Yes No

If 'Yes,' provide the name(s) of other entities and an explanation of their responsibilities (add more spaces or pages if needed):

Name and Explanation:

Name and Explanation:

2.a. Is the permittee part of a group sharing a SWMP with other entities?

Yes No

2.b. If 'yes,' is this a system-wide annual report including information for all permittees?

Yes No

If 'Yes,' list all associated authorization numbers, permittee names, and SWMP **responsibilities of each** member. (add additional spaces or pages if needed):

Authorization Number: _____ Permittee: _____

Authorization Number: _____ Permittee: _____

Authorization Number: _____ Permittee: _____

I. Construction Activities

1. The number of construction activities that occurred in the jurisdictional area of the MS4 (Notices of intent and site notices received; Refer to the MS4 General Permit TXR040000 Part IV Section B.2.(h))

2

2a. Does the permittee utilize the optional 7th MCM related to construction?

Yes No

2b. If 'yes,' then provide the following information for this permit year (refer to the MS4 General Permit TXR040000 Part IV Section B.2.(i)):

The number of municipal construction activities authorized under this general permit	2
The total number of acres disturbed for municipal construction projects	41

Note: *Though the seventh MCM is optional, implementation must be requested on the NOI or on a NOC and approved by the TCEQ.*

J. Certification

I certify under penalty of law that this document and all attachments were prepared under my direction or supervision in accordance with a system designed to assure that qualified personnel properly gathered and evaluated the information submitted. Based on my inquiry of the person or persons who manage the system, or those persons directly responsible for gathering the information, the information submitted is, to the best of my knowledge and belief, true, accurate, and complete. I am aware that there are significant penalties for submitting false information, including the possibility of fine and imprisonment for knowing violations.

Name of MS4 City of Richmond

Name (printed): Scott Fajkus

Title: Water Quality / Code Compliance Supervisor

Signature: Scott Fajkus

Date: 03/24/2021

Note: If this is this a system-wide annual report including information for all permittees, each permittee shall sign and certify the annual report in accordance with 30 TAC §305.128 (relating to Signatories to Reports).

Introduction

This Annual Report satisfies the requirements of Part IV.B.2 of the TPDES Small MS4 General Permit TXR040000. Additional information is provided in this narrative section to supplement the data reported on the TCEQ Standard Form No. 20561 (Rev July 2019) for annual reporting.



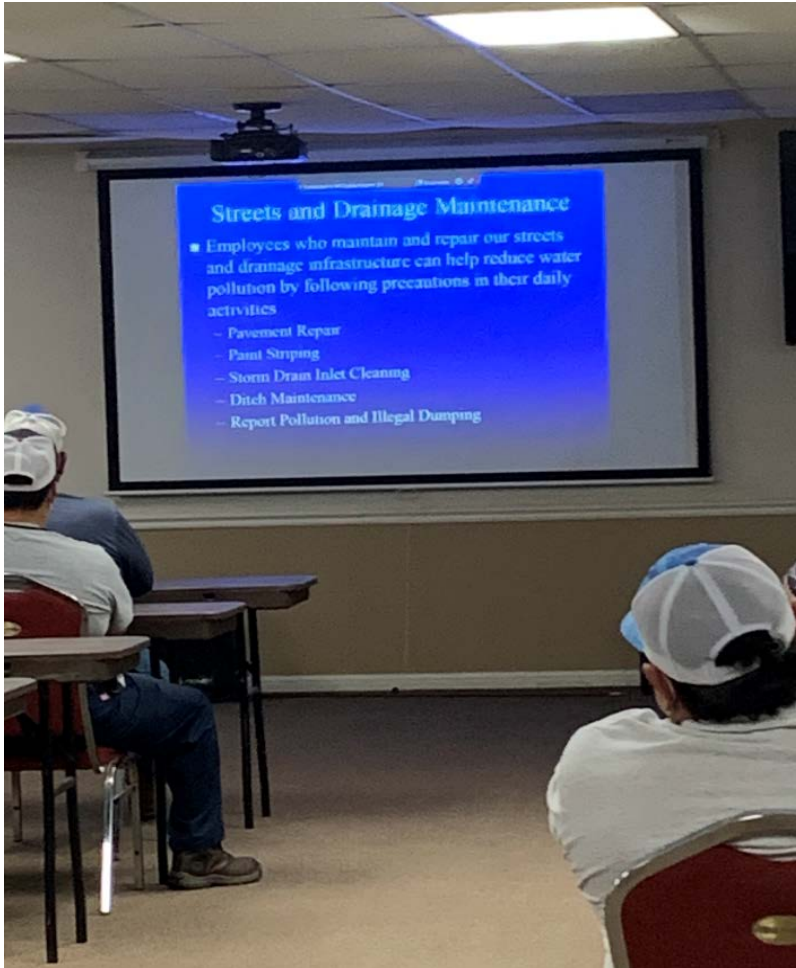
Attachment A

City of Richmond Annual Report - Year 2

MCM- Public Education

1.A Municipal Staff Training.

The City conducted a 1hour training course on pollution and illegal dumping.



Safety Meeting

Date - October 14, 2020

Topic - Storm Water Pollution and Prevention

Streets and Drainage

- | | |
|---------------------------|------------------------|
| 1. <u>[Signature]</u> | 25. <u>Big Hunt</u> |
| 2. <u>[Signature]</u> | 26. <u>[Signature]</u> |
| 3. <u>Kenneth Kennedy</u> | 27. <u>[Signature]</u> |
| 4. <u>[Signature]</u> | 28. <u>[Signature]</u> |
| 5. <u>[Signature]</u> | 29. <u>[Signature]</u> |
| 6. <u>[Signature]</u> | 30. <u>[Signature]</u> |
| 7. <u>[Signature]</u> | 31. <u>[Signature]</u> |
| 8. <u>[Signature]</u> | 32. <u>[Signature]</u> |
| 9. <u>[Signature]</u> | 33. <u>[Signature]</u> |
| 10. <u>[Signature]</u> | 34. <u>[Signature]</u> |
| 11. <u>[Signature]</u> | 35. <u>[Signature]</u> |
| 12. <u>[Signature]</u> | 36. <u>[Signature]</u> |
| 13. <u>[Signature]</u> | 37. <u>[Signature]</u> |
| 14. <u>[Signature]</u> | 38. <u>[Signature]</u> |
| 15. <u>[Signature]</u> | 39. _____ |
| 16. <u>[Signature]</u> | 40. _____ |
| 17. <u>[Signature]</u> | 41. _____ |
| 18. <u>[Signature]</u> | 42. _____ |
| 19. <u>[Signature]</u> | 43. _____ |
| 20. <u>[Signature]</u> | 44. _____ |
| 21. <u>[Signature]</u> | 45. _____ |
| 22. <u>[Signature]</u> | 46. _____ |
| 23. <u>[Signature]</u> | 47. _____ |
| 24. <u>[Signature]</u> | 48. _____ |

MCM- Public Education

1.B Storm Drain Markings.

The City will mark inspect 20% storm drains annually and replace markers if needed.



1.C Educational Material

The City added the brochure to the website and did not do any mailings due to Covid-19.


Make your home
The SOLUTION
TO STORM WATER
POLLUTION!

As storm water flows over driveways, lawns, and sidewalks, it picks up debris chemicals, dirt, and other pollutants. Storm water can flow into a storm sewer system or directly to a storm sewer, ditch, stream, river, or other bodies of water. Anything that enters a storm sewer system is discharged untreated into the waterbodies we use for swimming, fishing, and providing drinking water. Polluted runoff is the nation's greatest threat to clean water.

By practicing healthy household habits, homeowners can keep common pollutants like pesticides, pet waste, grass clippings, and automotive fluids off the ground and out of storm water.

Adopt these **Healthy Household Habits for Clean Water** and help protect lakes, streams, rivers, wetlands, and coastal waters.

Remember to share the habits with your neighbors!



Healthy Household Habits for Clean Water

Vehicle and Garage

Use a commercial car wash or wash your car on a lawn or other unpaved surface to **minimize** the amount of dirty, soapy water flowing into the storm drain and eventually into your local waterbody.

Check your car, boat, motorcycle, and other machinery and equipment for leaks and spills. Make repairs as soon as possible. Clean up **spilled fluids** with an absorbent material like kitty litter or sand, and don't rinse the spills into a nearby storm drain. Remember to properly dispose of the absorbent material.

Recycle used oil and other automotive fluids at participating service stations. Don't dump these chemicals down the storm drain or dispose of them in your trash.

Lawn and Garden

Use pesticides and fertilizers **sparsely**. When use is necessary, use these chemicals in the recommended amounts. Avoid application if the forecast calls for rain; otherwise, chemicals will be washed into your local storm sewer, ditch, stream, river or other bodies of water.

Select **native** plants and grasses that are drought and pest resistant. Native plants require less water, fertilizer, and pesticides.

Sweep up yard debris, rather than hosing down areas. Compost or recycle yard waste when possible.

Don't overwater your lawn. Water during the **cool** times of the day, and don't let water run off into the storm drain.

Cover piles of dirt and mulch being used in landscaping projects to prevent these pollutants from blowing or washing off your yard and into the storm sewer, ditch or local waterbodies.

Vegetate bare spots in your yard to prevent soil erosion.

Home Repair and Improvement

Before beginning an outdoor project, locate the nearest storm drains and **protect** them from debris and other materials.

Sweep up and properly dispose of construction debris such as concrete and mortar.

Use hazardous substances like paints, solvents, and cleaners in the **smallest amounts possible**, and follow the directions on the label.

Clean up spills **immediately**, and dispose of the waste safely.

Store substances properly to avoid leaks and spills.

Purchase and use nontoxic, biodegradable, recycled, and **recyclable** products whenever possible.

Clean paint brushes in a sink, not outdoors.

Filter and reuse paint thinner when using oil-based paints.

Properly dispose of excess paints through a household hazardous waste collection program, or donate unused paint to local organizations.

Reduce the amount of paved area and increase the amount of vegetated area in your yard.

Use native plants in your landscaping to reduce the need for watering during dry periods.

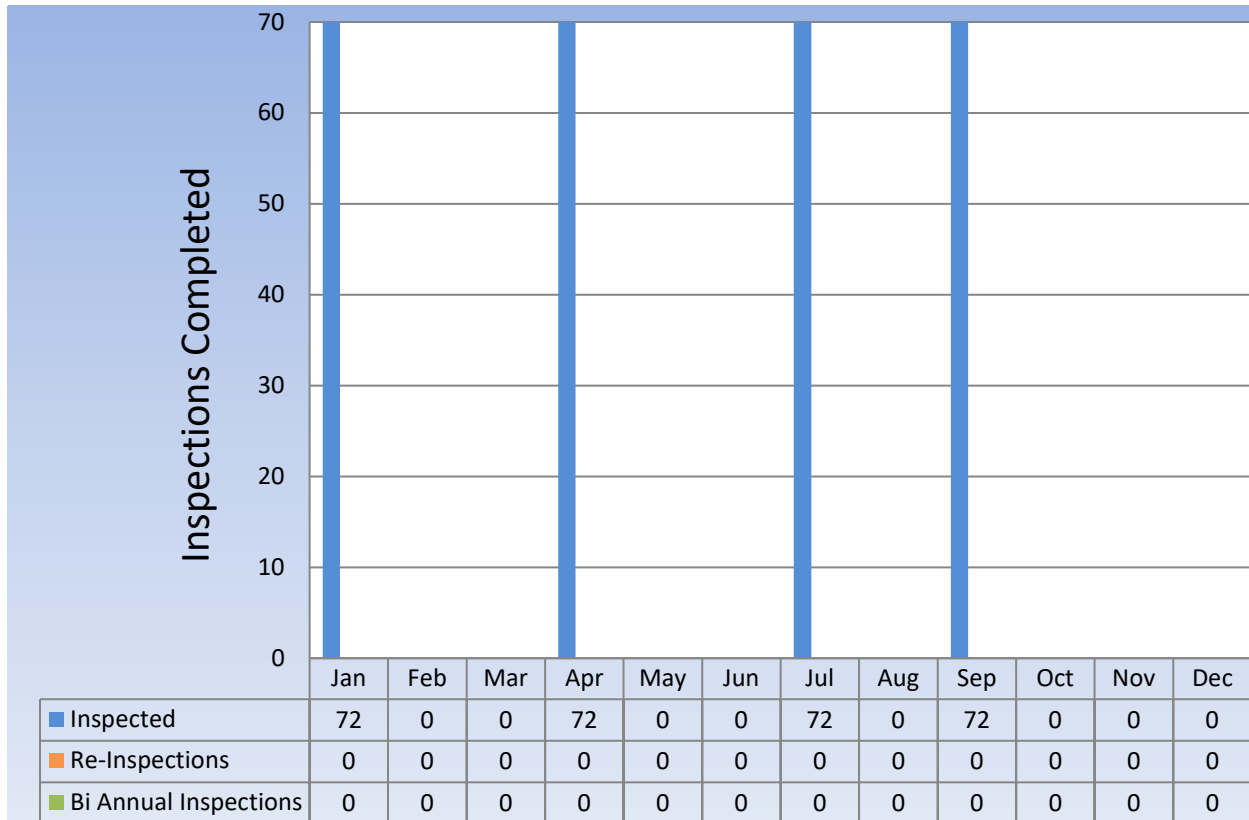
Consider directing downspouts away from paved surfaces onto lawns and other measures to increase infiltration and reduce polluted runoff.

**Storm drains connect to waterbodies...
only rain down the drain.**

MCM - Illicit Discharge Detection Program And Elimination Minimum Control Measure

2.B On-Site Sewerage Disposal System Identification and Inspection

The program helps eliminate choked sewer mains which lead to Sanitary Sewer Overflows. Eliminating these overflows will ensure that receiving waters do not get impacted.

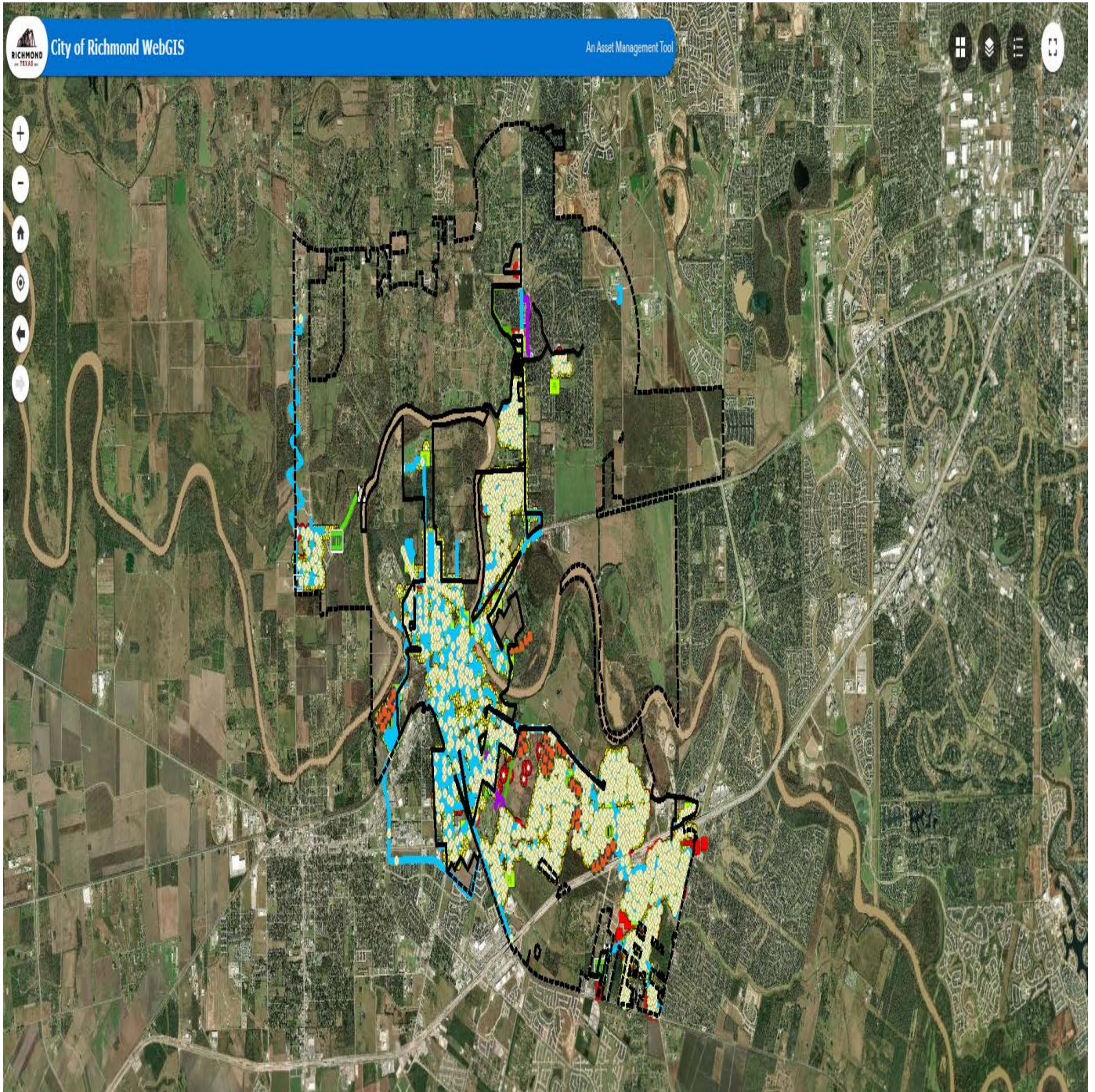


	Monthly	Bi-Annual	Re-Inspections	Total
Jan	72	0	0	72
Feb	0	0	0	0
Mar	0	0	0	0
Apr	72	0	0	72
May	0	0	0	0
Jun	0	0	0	0
Jul	72	0	0	0
Aug	0	0	0	0
Sep	72	0	0	72
Oct	0	0	0	0
Nov	0	0	0	0
Dec	0	0	0	0
Total	288	0	0	216

MCM - Illicit Discharge and Detection Program.

2.C Storm Drainage System Mapping


The City of Richmond is contracted with Jones and Carter for updates to the GIS System for all Water, Sanitary, Roads, Construction Projects and Storm Water.



2.B Prevent Improper Waste Disposal

The Public Services — Utility Division placed brochure on the City of Richmond Website and did not do any mail outs due to Covid-19.







Let's Tackle the Grease in This Kitchen!







Why should I help?

- Prevent grease buildups from blocking sewer lines.
- Stop sewer overflows into streets and storm drains.
- Save money spent on costly cleanups of sewage spills.
- Reduce the number of times you have to clean your grease trap (food service).
- Protect the quality of our water.

DO!

-  ✓ Put oil and grease in covered collection containers.
-  ✓ Scrape food scraps from dishes into trash cans and garbage bags and dispose of properly. Avoid using your garbage disposal.
-  ✓ Remove oil and grease from dishes, pans, fryers, and griddles. Cool first before you skim, scrape, or wipe off excess grease.
-  ✓ Prewash dishes and pans with cold water before putting them in the dishwasher.
-  ✓ Cover kitchen sink with catch basket and empty into garbage can as needed.
-  ✓ Cover floor drain with fine screen and empty into garbage can as needed.



DON'T!

-  ✗ Don't pour oil and grease down the drain.
-  ✗ Don't put food scraps down the drain.
-  ✗ Don't run water over dishes, pans, fryers, and griddles to wash oil and grease down the drain.
-  ✗ Don't rinse off oil and grease with hot water.

More Ways to Tackle Grease

- ▶ Use environmentally safe cleaning products instead of harsh detergents or cleaners that can damage sewer lines.
- ▶ If you generate large amounts of used cooking oil, reuse or recycle it. To find a recycler, check the phone book under "recyclers" or "rendering companies."
- ▶ If you generate small amounts of used cooking oil, reuse it as often as possible and then pour it into a container you can throw away. Never pour it down the drain.
- ▶ Start a compost pile at your home with scraps that are not meat. The TCEQ publication *Mulching and Composting: A "Take Care of Texas" Guide (GI-36)* provides basic information to get you started.

For more information, contact the Texas Commission on Environmental Quality (TCEQ) Small Business & Local Government Assistance Section 1-800-447-2827 • TexasEnviroHelp.org



The TCEQ is an equal opportunity institution. This service does not provide information on the basis of race, color, religion, national origin, sex, disability, age, sexual orientation, or marital status. How is our customer service? www.tceq.texas.gov/customer-service

© 2016 (Revised 8/13)

5.B Waste Disposal

Pet Waste Stations have been implemented in City of Richmond Parks for 2020.



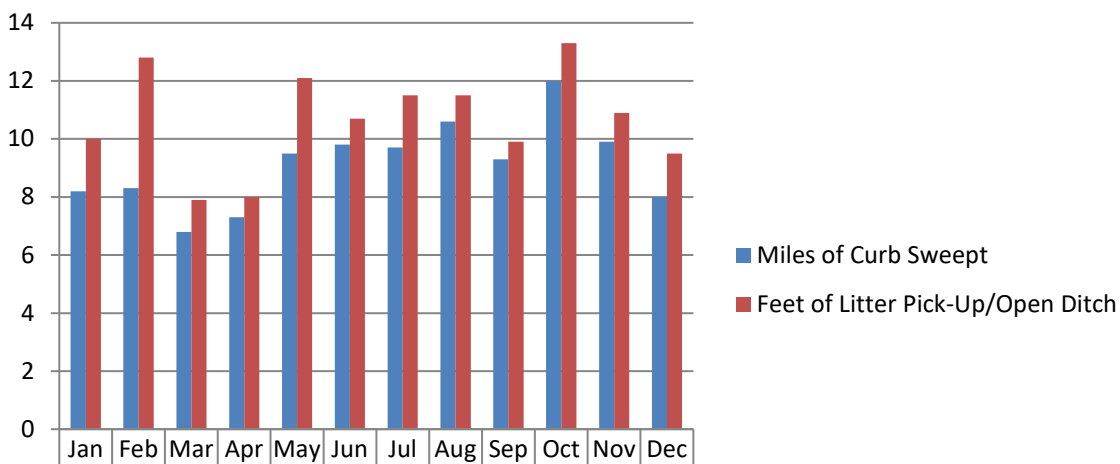
MCM - Pollution Prevention Good House Keeping for Municipal Operations

5.C Street Sweeping

Continue to identify areas priority areas for street sweeping.

Month	Miles of Curb Swept	Feet of Litter Pick-Up/Open Ditch
Jan	8.2	10
Feb	8.3	12.8
Mar	6.8	7.9
Apr	7.3	8
May	9.5	12.1
Jun	9.8	10.7
Jul	9.7	11.5
Aug	10.6	11.5
Sep	9.3	9.9
Oct	12	13.3
Nov	9.9	10.9
Dec	8	9.5
Total	109.4	128.1

2020 STREET SWEEPING MILAGE



■ Miles of Curb Swept	8.2	8.3	6.8	7.3	9.5	9.8	9.7	10.6	9.3	12	9.9	8
■ Feet of Litter Pick-Up/Open Ditch	10	12.8	7.9	8	12.1	10.7	11.5	11.5	9.9	13.3	10.9	9.5

5.D Litter Control

The Solid Waste department ensures that each resident who receives garbage pick-up also receives curbside recycling. The City of Richmond currently contracts with Republic Services to provide curbside recycling and garbage pick up to the residents.

[Departments](#) » [Public Works](#) » [Sanitation](#) »

Recycling

Font Size: [+](#) [-](#) [+](#) [Share & Bookmark](#) [Feedback](#) [Print](#)

Reduce, reuse and recycle are important reminders in today's world. Recycling provides an opportunity to reduce the amount of waste going to our landfills, save energy and conserve natural resources. Never, never put anything into a storm drain, no exceptions.

Upon Request, each household is provided one blue recycle bin.

All solid waste, recycling, heavy item (once-a-month) and lawn/limb compost shall be placed at the curb no later than 7:00 a.m. on the day of collection.

The following is accepted:

Mixed Paper: Newspapers, magazines, catalogs, phone books, office paper, school paper, junk mail, envelopes, and paperback books.

Cardboard, Paperboard and Paper Bags: Breakdown boxes for disposal. Please make sure they are not contaminated by food, liquid or waste.

Aluminum, Steel and Tin: Aluminum cans, foil, food trays, steel and tin cans. Please make sure they are not contaminated by food, liquid or waste.

Plastics #1 - #5 and #7: Within each chasing arrows triangle, there is a number which ranges from one to seven. The purpose of the number is to identify the type of plastic used for the product, and not all plastics are recyclable or even reusable. (#6 is not accepted. This is styrofoam.) Please make sure they are not contaminated by food, liquid or waste.

Glass Bottles and Jars: Glass bottles and jars (all colors) can be recycled in your blue recycle cart. All other types of glass, including broken glass, drinking glasses, ceramics, etc. should be put in your garbage cart. Please make sure they are not contaminated by food, liquid or waste.

Cartons: Milk, juice, broth, soup and other food and beverage cartons. Please make sure they are not contaminated by food, liquid or waste.

Unacceptable items: plastic grocery bags, styrofoam, plastic wrap, aerosol cans of any type or scrap metal.

[Holiday Recycling Tips](#) - Here are tips to become better recyclers during the holiday season! Americans generate 25% more waste between Thanksgiving and New Year's Day. Remarkably, about 80% of what is thrown away during the holidays could actually be recycled or repurposed.



Solid Waste FAQs

[PrintFeedback](#)

[Share & Bookmark](#) Press Enter to show all options, press Tab go to next option

[Font Size:+-](#)

Helpful Tips About Your Garbage Pickup Service:

Be sure to have your garbage / poly cart out by 7:00 a.m. to ensure service on your designated collection day. Republic Waste Systems provides pickup service between 7:00 a.m. and 7:00 p.m..

Please **do not overfill** your **poly cart**, the lids should close completely. Overfilled poly carts can cause spillage during the collection process and litter your property and neighborhood streets. **Overfilled poly carts will not be serviced.** Please do not put garbage bags on top of the cart. Your cart should be loose enough to come out when tipped during servicing. Tightly compacted bags or trash inside the cart may not come out when serviced. Republic Services is not responsible for garbage that spills during the collection process. All trash must be in the poly cart. Trash bags outside of the poly carts will not be collected due to the automation service.

All poly carts and recycling bins must be placed within 3 feet of the street for curbside collection. Please make sure your poly cart is not blocked by vehicles. The collection arm on the automated truck requires space to make the collection safely. Please keep the containers away from obstacles that may interfere with the collection. Placement of your poly cart in the correct position is critical to servicing your residence as this collection is done by automation.

I have more garbage than can fit in the cart. Can I get an additional cart or use my own?

Are you recycling? Recycling materials will give you more room in your garbage cart. Additional garbage carts are available for a fee of \$6.50 per month and can be requested by contacting City of Richmond Customer Service Department at 281-342-5456. Residents are to use Republic Services issued garbage carts; personal trash cans are not allowed for trash collection.

My Republic Service poly cart is damaged or missing. How can I get a replacement cart?

Please contact the Public Works Department at 281-342-0559 and notify them of the damaged or missing cart. The cart will be repaired or replaced if it is stolen or damaged beyond repair.

What items are not accepted in the trash?

Republic Services will not pick up automobile parts, tree stumps and logs heavier than 50 pounds and greater than 4 feet in length, dirt, construction debris, concrete, bricks, rocks, roofing materials, metal poles, trampoline frames, highly volatile, toxic or hazardous chemicals, lead batteries, motor oil, tires, gasoline, paint or fence pickets with nails.

Items like construction debris; you may dispose of the material at a local landfill for a fee.

When is heavy trash/appliance pickup?

Republic Services will properly collect and dispose of four heavy items per month, per account, such as washing machines, dryers and hot water heaters, on the second Wednesday of the month. Large items and appliances are picked up at the curbside. Some large or unusually heavy items are not collected at the curbside. Please call the Public Works Department at 281.342.0559 if you have a question about a particular item.

Any appliance containing refrigerant/freon must be certified and tagged by a professional to be free of refrigerants. Our solid waste carrier will not remove the item without the certificate tag. If the item is a refrigerator/freezer, the doors must be removed before placing them out for collection. This is a safety measure to ensure that children do not get trapped inside. These items can be taken to the Fort Bend County Recycling Center for a fee.

Please call the Fort Bend Recycling Center at 281-633-7581 for hours of operation and information regarding acceptable materials or their website for accepted material and Fees. (Link provided below)

<https://www.fortbendcountytx.gov/government/departments/county-services/recycling-center-hhw/accepted-material>

Most likely, appliance stores will take the old appliances with the purchase of new ones.

Please Consider Recycling!

Republic Services provides once-a-week curbside/street recycling and provides each home with one free 18-gallon blue bin. The collection program is included as part of your solid waste residential collection services. Recycle bins are made available at Public Works, 600 Morton Street. Additional recycle carts are provided at no charge.

Acceptable Items in the Bin:

- Mixed Paper: Newspapers, magazines, catalogs, phone books, office paper, school paper, junk mail, envelopes, and paperback books.
- Cardboard, Paperboard and Paper Bags: Breakdown boxes for disposal.
- Aluminum, Steel and Tin: Aluminum cans, foil, food trays, steel and tin cans.
- Plastics #1 - #5 and #7: Within each chasing arrows triangle, there is a number which ranges from one to seven. The purpose of the number is to identify the type of plastic used for the product, and not all plastics are recyclable or even reusable. (#6 is not accepted. This is styrofoam.)
- Glass Bottles and Jars: Glass bottles and jars (all colors) can be recycled in your blue recycle cart. All other types of glass, including broken glass, drinking glasses, ceramics, etc. should be put in your garbage cart.
- Cartons: Milk, juice, broth, soup and other food and beverage cartons.

Unacceptable items include plastic grocery bags, styrofoam, plastic wrap, aerosol cans of any type or scrap metal.

Note: Some of the trucks used to collect recyclables look similar to regular trash trucks. Please be assured that the recyclables are sorted after collection and then delivered to the appropriate recycling site.

How do I dispose of Household Hazardous Waste?

Please dispose of your old latex paint, motor oil, transmission oil, power steering fluid, batteries and antifreeze without harming the environment. Fort Bend County's Recycling Center is located at 1200 Blume Road in Rosenberg. A valid driver's license or other proof of residency in Fort Bend County is required. Please call the Recycle Center at 281-633-7581 for hours of operation and information regarding acceptable materials or their website for accepted material and Fees. (Link provided below)

<https://www.fortbendcountytexas.gov/government/departments/county-services/recycling-center-hhw/accepted-material>

How can I properly dispose of paint?

Wet paint cannot be collected at the curbside. Dry paint will be collected if the lid is left off the can. To dry your leftover paint, mix cat litter or other absorbent with the wet paint and allow to dry until solid. Never pour paint or anything else down the storm drain. To properly dispose of wet paint, take your leftover paint to Fort Bend County's Recycling Center.

Please call the Recycle Center at 281-633-7581 for hours of operation and information regarding acceptable materials or their website for accepted material and Fees. (Link provided below)

<https://www.fortbendcountytexas.gov/government/departments/county-services/recycling-center-hhw/accepted-material>

How do I properly dispose of tree limbs and brush?

Bulky items such as yard trimmings and tree limbs are collected every Wednesday. Bundled tree limbs/trimmings and hedge cuttings shall not exceed four (4) feet in length or four (4) inches in diameter. Tree stumps and large limbs shall be no longer than two feet in length and have a diameter equal to or less than 6 inches.

If you have any questions regarding your service, please call:

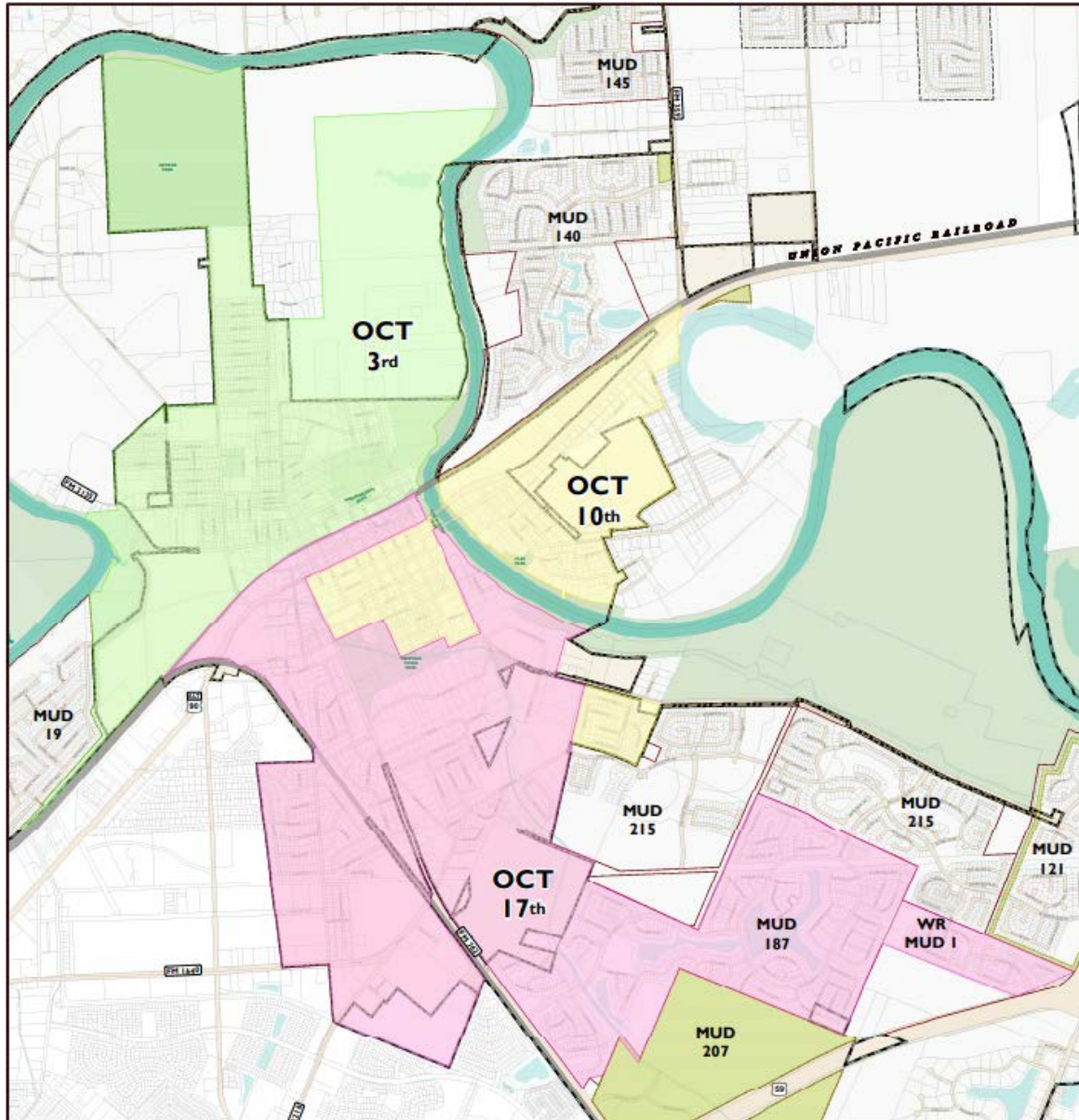
City of Richmond Public Works Department - 281.342.0559

MCM - Pollution Prevention Good House Keeping for Municipal Operations.

5.D Litter Control

City of Richmond has City wide Fall Clean Up. Spring Clean Up canceled due to covid-19. Keep Richmond Beautiful also organized a Shredding Document Event.

CITY OF RICHMOND FALL CLEAN-UP 2020



LEGEND	
BOUNDARIES	REPUBLIC SERVICES FALL CLEAN-UP
CITY LIMITS	FALL SANITATION
LIMITED PURPOSE ANNEXATIONS	OCTOBER 3, 2020
EXTRAJURISDICTIONAL JURISDICTION	OCTOBER 10, 2020
MUNICIPAL UTILITY DISTRICTS (MUDs)	OCTOBER 17, 2020

MAP DISCLAIMER:
This map is provided for general informational purposes only and does not represent a legal record. The City of Richmond, Texas makes no warranty regarding specific accuracy or completeness, and the contents of this map may be subject to revision at any time without notification.

News

Font Size: [+](#) [-](#) [+](#) [Share & Bookmark](#)

[Feedback](#) [Print](#)

City of Richmond & Republic Services Fall Clean Up Campaign Ends

Post Date: 10/22/2020 2:00 PM

The 2020 Fall Clean Up Campaign has ended and the City of Richmond completed this 3 weekend Clean Up Campaign with 31.10 tons of household waste picked up, just under 12 tons less than Fall 2019. The City of Richmond and Republic Services partner twice a year, Spring and Fall to assist citizens in eliminating large item household waste. This Fall Clean Up campaign was the only campaign in 2020 for Richmond citizens since the Spring 2020 Clean Up campaign was cancelled due the pandemic.



[Return to full list >>](#)

Keep Richmond Beautiful (KRB- an affiliate of Keep Texas Beautiful) is sponsoring a Document Shredding Event with two Pro Shred trucks at City Hall parking lot from 9 am to 12 Noon on Saturday, April 6th, 2019! This event is for documents, not electronics, and for residents who receive utilities bill from City of Richmond (City residents and MUD's with utilities managed by City must provide proof of residence).



SHRED EVENT! KEEP RICHMOND BEAUTIFUL!!

What Can You Bring?

All Paper File Folders Hanging Files Notepads
Envelopes Cd's/DVD's

Sensitive Information: Tax Returns, Bank Statements, Credit Applications,
Credit Reports, Closing Documents.

No Need to Remove: Staples, Paper Clips, Fasteners or Rubber Bands

No - 3 Ring Binders

ID Required. Please bring your City of Richmond water bill stub for ID Purposes.

DRIVE THRU SERVICE – MUST STAY IN YOUR CAR!

Please be Advised of the following COVID-19 Health & Safety Measures:

- ✓ Social Distancing – Minimum 6 ft apart.
- ✓ Masks Required and No Physical Contact.
- ✓ Place all SHREDDING Material in Trunk Clearly Marked for Shred.
- ✓ Volunteers will Remove Shred Material from Car.
- ✓ Patron will be prompted to drive away.
- ✓ Your Safety is Our Concern.



Keep Richmond Beautiful Volunteers will be on-hand for any assistance needed.

2020

FALL CLEAN-UP
SATURDAY
OCTOBER 24, 2020

RICHMOND
CITY HALL
402 MORTON ST.

FREE!

DOCUMENTS
SHREDDED ON SITE!
9:00 A.M. – NOON

QUESTIONS CALL:
281.342.4114



CITY OF RICHMOND

402 Morton Street
Richmond, Texas
Richmondtx.gov

281.342.5456